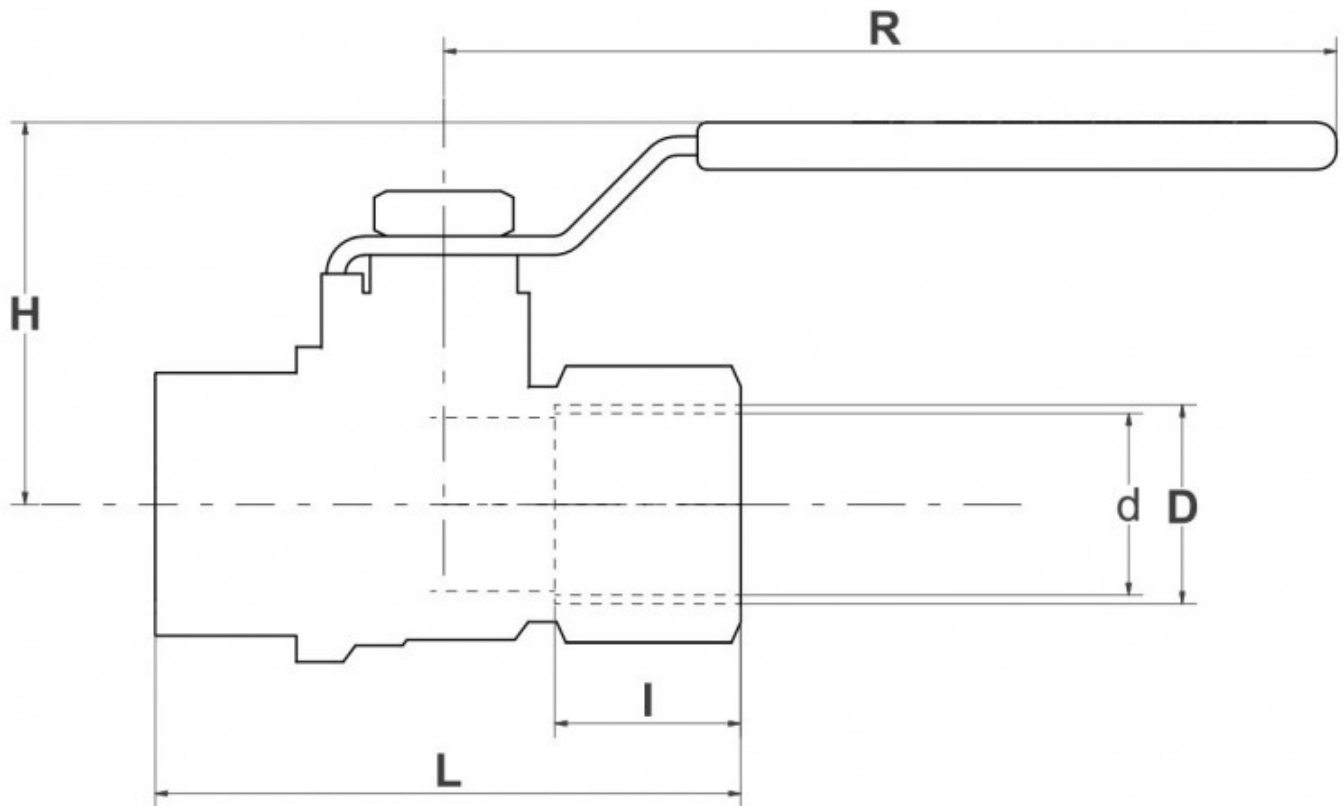


Ball Valves
Filtermate



Dimensions



	FM5104	FM5106	FM5108	FM5110	FM5112	FM5116
D	1/2"	3/4"	1"	1 1/4"	1 1/2"	2"
DN	15	20	25	32	40	50
d	15	20	25	32	40	50
H	39	49	61	66	82	89
I	17	18	21.5	23.5	23.5	28
L	62	69	84	96	106	127

Ball Valves

Filtermate

	FM5104	FM5106	FM5108	FM5110	FM5112	FM5116
R	75	95	120	120	150	150

Product Variations

FM5104

Part No:	FM5104
Short Description:	Filtermate ball valve, DN15
Nominal Dimension [DN]:	15
Pressure Rating [PN]:	42
KV:	14.5
Weight [kg]:	0.227
Dimensions:	/data/filtermate/Filtermate_dimensions.xlsx
Max Temperature [°C]:	100
Connection Size:	1/2"
Connection Type:	BSP ISO 7/1 or ISO 228

Ball Valves

Filtermate

FM5106

Part No:	FM5106
Short Description:	Filtermate ball valve, DN20
Nominal Dimension [DN]:	20
Pressure Rating [PN]:	42
KV:	30
Weight [kg]:	0.37
Dimensions:	/data/filtermate/Filtermate_dimensions.xlsx
Max Temperature [°C]:	100
Connection Size:	3/4"
Connection Type:	BSP ISO 7/1 or ISO 228

Ball Valves

Filtermate

FM5108

Part No:	FM5108
Short Description:	Filtermate ball valve, DN25
Nominal Dimension [DN]:	25
Pressure Rating [PN]:	35
KV:	45
Weight [kg]:	0.682
Dimensions:	/data/filtermate/Filtermate_dimensions.xlsx
Max Temperature [°C]:	100
Connection Size:	1"
Connection Type:	BSP ISO 7/1 or ISO 228

Ball Valves

Filtermate

FM5110

Part No:	FM5110
Short Description:	Filtermate ball valve, DN32
Nominal Dimension [DN]:	32
Pressure Rating [PN]:	35
KV:	97
Weight [kg]:	1.049
Dimensions:	/data/filtermate/Filtermate_dimensions.xlsx
Max Temperature [°C]:	100
Connection Size:	1-1/4"
Connection Type:	BSP ISO 7/1 or ISO 228

Ball Valves

Filtermate

FM5112

Part No:	FM5112
Short Description:	Filtermate ball valve, DN40
Nominal Dimension [DN]:	40
Pressure Rating [PN]:	35
KV:	150
Weight [kg]:	1.557
Dimensions:	/data/filtermate/Filtermate_dimensions.xlsx
Max Temperature [°C]:	100
Connection Size:	1-1/2"
Connection Type:	BSP ISO 7/1 or ISO 228

Ball Valves

Filtermate

FM5116

Part No:	FM5116
Short Description:	Filtermate ball valve, DN50
Nominal Dimension [DN]:	50
Pressure Rating [PN]:	35
KV:	220
Weight [kg]:	2.588
Dimensions:	/data/filtermate/Filtermate_dimensions.xlsx
Max Temperature [°C]:	100
Connection Size:	2"
Connection Type:	BSP ISO 7/1 or ISO 228